



GMT MONTHLY MEMBERSHIP PROGRESS REPORT

Results as of: 6/30/2020

Multiple District 22

LOCATION: MARYLAND

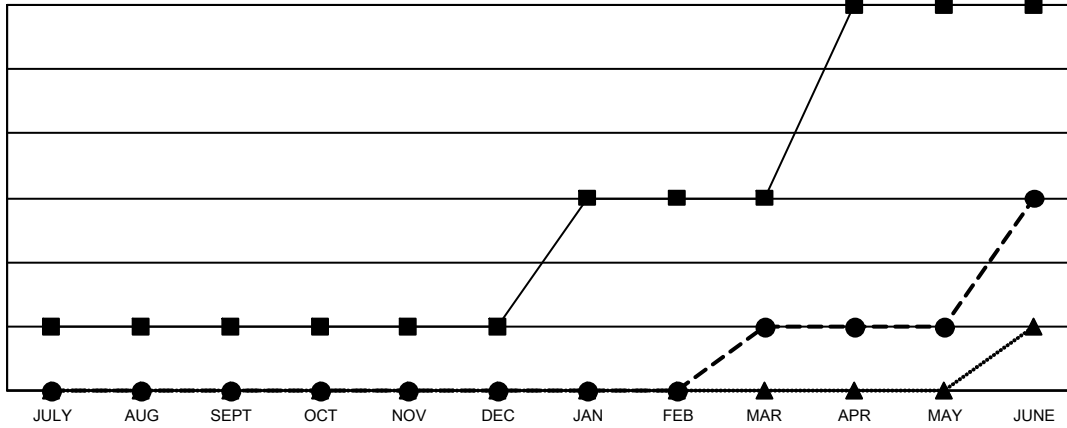
GMT: OPEN

GMT CA 1

Clubs			
RESULTS FOR 2019-2020			
QUARTER	NEW CLUB GOAL	NEW CLUBS	DROPPED CLUBS
JULY/AUG/SEPT	1	0	1
OCT/NOV/DEC	0	0	4
JAN/FEB/MAR	2	1	0
APR/MAY/JUNE	3	2	1

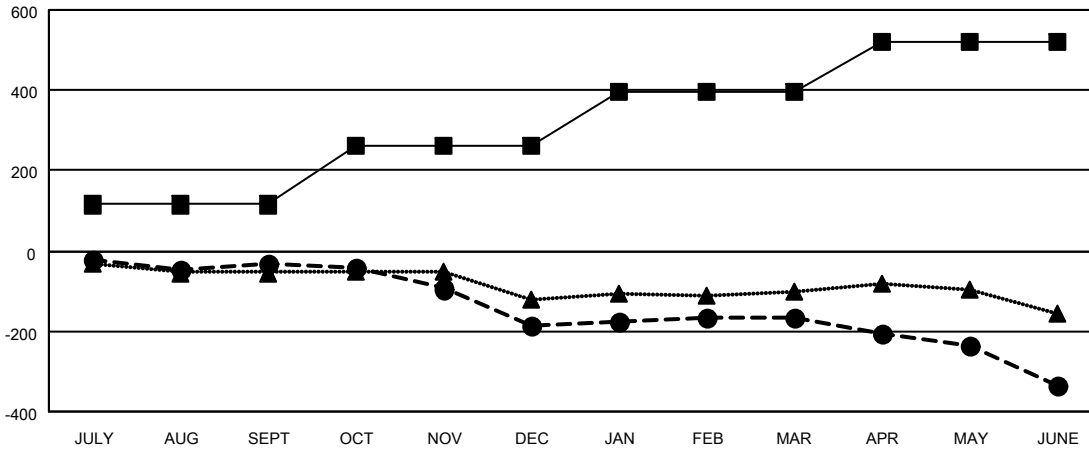
Members			
RESULTS FOR 2019-2020			
QUARTER	MEMBER GROWTH NET GOAL	MEMBER GROWTH ACTUAL	DROPPED MEMBERS ACTUAL (including transfers)
JULY/AUG/SEPT	115	138	160
OCT/NOV/DEC	145	126	250
JAN/FEB/MAR	135	152	117
APR/MAY/JUNE	125	99	256

GOALS AND ACTUAL NEW CLUBS CUMULATIVE



- - CURRENT YEAR GOALS FOR NEW CLUBS
- - CURRENT YEAR ACTUAL NEW CLUBS
- ▲ - LAST YEAR ACTUAL NEW CLUBS

GOALS AND ACTUAL MEMBERS CUMULATIVE



- - MEMBER GROWTH NET GOAL
- - MEMBER GROWTH ACTUAL
- ▲ - LAST YEAR MEMBERSHIP ACTUAL

DROPPED CLUBS: 6	128 CLUBS OF 215 ADDED 1 OR MORE NEW MEMBERS	GENDER DISTRIBUTION MALE 4,105 (66.00%) FEMALE 2,115 (34.00%)
DROPPED MEMBERS DECEASED 133 CLUB CANCELLED 84 OTHER 565 TOTAL 782	CLICK HERE FOR CUMULATIVE MEMBERSHIP DATA	TOTAL FAMILY UNIT MEMBERS 1,214 FAMILY MEMBERS PAYING HALF DUES 630